

GO TOUCH DOWN

— TRAVEL & TOURS —

Adventure Safari

7 Nights / 8 Days

This 8-Day starts with a Big 5 safari destination in the Waterberg region of outstanding scenic beauty, an African Eden, and one of the few UNESCO-recognised biosphere reserves on the planet.

Step back in time to an ancient land of extinct volcanoes, thickly forested ravines and rocky outcrops. See the art left behind by the first inhabitants of this, the largest volcanic complex of its kind in the world. So large that it holds the world's third-largest canyon and the world's largest green canyon. Come face-to-face, with some of the 7000 animals, roaming Tshukudu Private Game Reserve and Kruger National Park, including the Big 5. With 13 excursions, 20 meals with gratuities and guided game drives among the benefits included. This tour commences every Wednesday throughout the year.

The Adventure Experience Series is just that – adventure, exactly as it should be experienced. Decades in the making, this experience will delight your senses and excite your soul with the destination's vibrance, its flavour, its people, its culture and history, as well as its unique flora and fauna. When you think of adventure, this experience is what you will remember for a lifetime.

Fast Facts

8 Days / 7 Nights

Group Size: Guided (Max 6 Pax) featuring Royal Morubisi & Tshukudu.

Tour departs **every Wednesday** throughout the year.

Reference Number: RMT001

Tour Includes

- ✓ **7 nights** accommodation
- ✓ **12 excursions**, includes 11 game drives with experienced guides and 1 full day in Kruger National Park
- ✓ **20 meals** and the gratuities
- ✓ **Restaurants** listed may be changed to similar or better venues due to availability
- ✓ **Non-specialty coffee & tea** is complimentary but only at accommodation and at included meals
- ✓ **Bottled water** provided daily in your room
- ✓ **Standard transfers** from and to airports, accommodations and activities as outlined in detailed itinerary
- ✓ **Transport** in an air-conditioned luxury vehicle and bottled water provided daily in your vehicle
- ✓ **Guided game drives** in an open 9-seat off-road vehicle
- ✓ **Dedicated, friendly** and knowledgeable driver and local guide

PRICE:

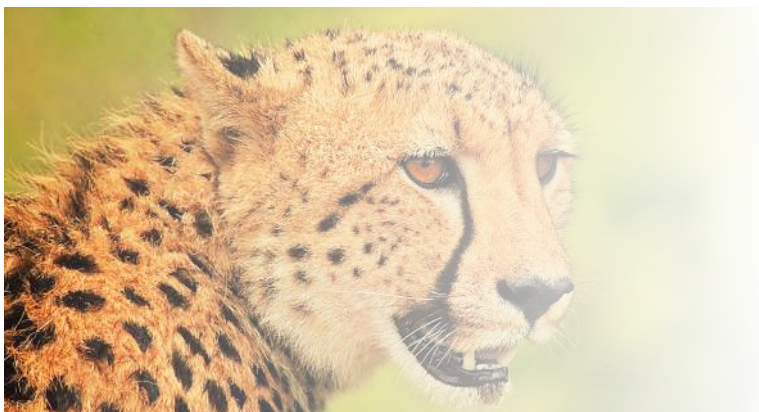
Special Rate to be discussed

SAVE NOW – TRAVEL LATER, travel anytime within the next 24 months at these rates.

+1-877-480-6881

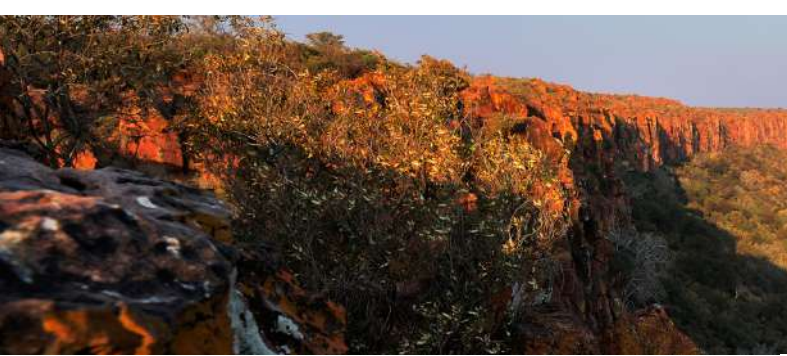
info@gotouchdown.com

http://www.gotouchdown.com

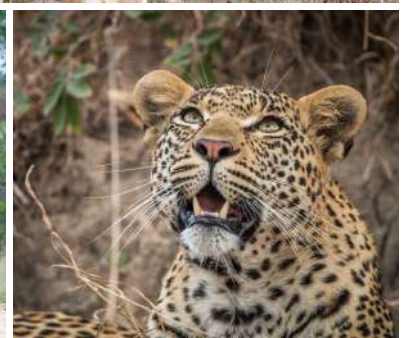


Destinations

Situated amidst the towering **Waterberg Mountains in the Limpopo Province**, the Waterberg Biosphere, as the name suggests, serves as a water reservoir for the region. Renowned for its rugged beauty, the landscape is characterised by low-lying mountain ranges and escarpments, as well as a network of streams, rivers and lakes. It is the home of South Africa's first-ever savannah biosphere reserve and is also home to many other nature reserves which provide a protected habitat for an array of wildlife. Visitors can enjoy a relaxing soak in natural hot springs, discover the ancient World Heritage-listed archaeological site in Makapans Valley, and view abundant birdlife at the Nylsvley Wetlands.





Stretching over more than two million hectares, the famous **Kruger National Park** is one of the world's largest game reserves and a truly remarkable destination. Owing to its exceptional size, visitors are able to experience fantastic diversity – from changing scenery and ecosystems to an impressive array of animals, plantlife and birdlife. The park is home to over 130 mammals and over 500 bird species. Visitors can look forward to learning about the area's prehistoric past, enjoying a host of accommodation options, and viewing abundant wildlife including the famed Big Five. The diversity and sheer density of wildlife make Kruger National Park an unforgettable and once-in-a-lifetime experience.



Daily Information

Adventure Safari

Your tour representative will meet you upon your arrival at Johannesburg OR Tambo International Airport and take you 3 hours away to malaria-free, Big 5, Kaingo Game Reserve.

<p>DAY 1 The Waterberg Biosphere</p> <p>Welcome Cocktail and Snacks at Royal Morubisi</p> <p>Sunset Game Drive in Kaingo Game Reserve</p> <p>Dinner</p> <p>ACCOMMODATION Royal Morubisi 5* or Similar</p>	<p>DAY 2 The Waterberg Biosphere</p> <p>Sunrise Game Drive in Kaingo Game Reserve Breakfast <i>At Leisure / Recommended Activities</i> Lunch Sunset Game Drive in Kaingo Game Reserve Dinner</p> <p>ACCOMMODATION Royal Morubisi 5* or Similar</p>	<p>DAY 3 The Waterberg Biosphere</p> <p>Sunrise Game Drive in Kaingo Game Reserve Breakfast <i>At Leisure / Recommended Activities</i> Lunch Sunset Game Drive in Kaingo Game Reserve Dinner</p> <p>ACCOMMODATION Royal Morubisi 5* or Similar</p>	<p>DAY 4 Kruger National Park</p> <p>Sunrise Game Drive Breakfast Lunch en-route Tshukudu Welcome Cocktail upon arrival Dinner</p> <p>ACCOMMODATION Tshukudu Game Lodge or Similar</p>
<p>DAY 5 Kruger National Park</p> <p>Sunrise Game Drive Breakfast <i>At leisure / Optional Activities</i> Lunch <i>At leisure / Optional Activities</i> Sunset Game Drive Dinner</p> <p>ACCOMMODATION Tshukudu Game Lodge or Similar</p>	<p>DAY 6 Kruger National Park</p> <p>Breakfast Full Day Kruger National Park Game Drive including Lunch at Satara Camp Dinner</p> <p>ACCOMMODATION Tshukudu Game Lodge or Similar</p>	<p>DAY 7 Kruger National Park</p> <p>Sunrise Game Drive Breakfast <i>At leisure / Optional Activities</i> Lunch At leisure Sunset Game Drive Dinner</p> <p>ACCOMMODATION Tshukudu Game Lodge or Similar</p>	
<p>DAY 8 End of Itinerary</p> <p>Sunrise Game Drive Breakfast</p> <p>Transfer to Hoedspruit Airport. There, check-in for your flight home or onward to another adventure on your vacation.</p> <p><i>*Flight Excluded</i></p>			

Accommodation

Reminiscent of a traditional African safari camp, **Royal Morubisi** offers a luxurious safari accommodation experience. Built from natural stone with thatch roofs, the lodge has an old world-Africa atmosphere while being completely contemporary. All comforts are catered for in the plush suites and throughout this carefully appointed luxury safari lodge, surrounded with nature inspired décor and accent colours.



Tshukudu Private Game Reserve borders the world renowned Kruger National Park and combines home comforts with the exciting Big 5 safari experience. Tshukudu covers 3800ha of prime Bushveld and is situated close to Hoedspruit in the Limpopo Province.

Breakfasts and light lunches are served on the thatched veranda and the evening dinners seated around a roaring fire in the African Boma, under the stars.

Our Game Guides will also accompany guests in the morning and early evening in open 4x4 game drive vehicles.



Information

Excludes

Unless otherwise specified

- ✓ All flights, related costs and taxes (international and local)
- ✓ All meals and beverages (bottled water, coffee, tea, soda, specialty beverages and alcohol)
- ✓ Visa and passport fees
- ✓ Portage and tipping
- ✓ Trip insurance and items of a personal nature
- ✓ Cost of spa treatment



The Waterberg Biosphere Royal Morubisi

3 Nights
(Days 1 - 4)



Kruger National Park Tshukudu Game Lodge

4 Nights
(Days 4 - 8)

Terms and Conditions

CHILDREN: Adult rate charged for children 12 years and up

✓ **Ages 4 to 12** – must share with adult

Pricing for children quoted at time of request

✓ **Children 13 +** charged at adult rates

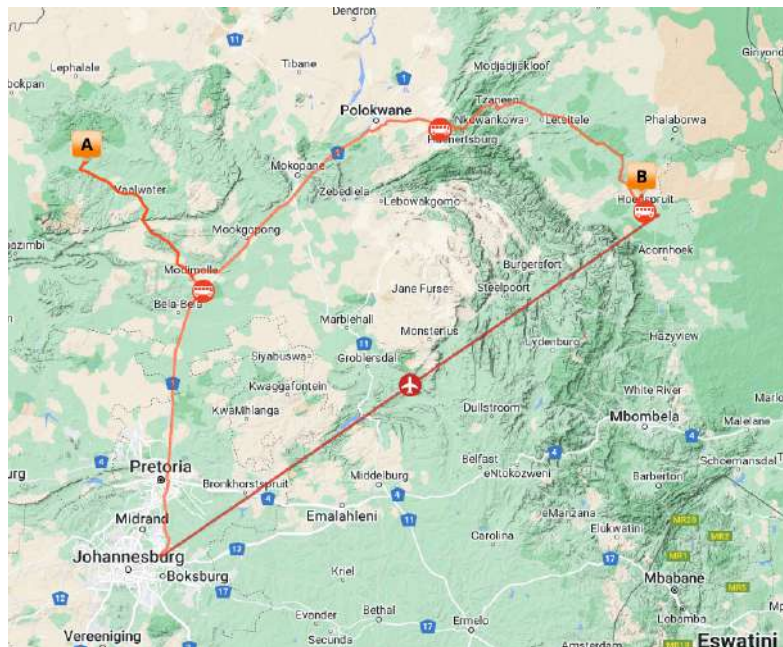
✓ **Only one bed** can be added to room and only to certain rooms

✓ **Children must be** at least 12 years old to go on game drives

✓ **Can accommodate** children 4 to 12 years old on game drives if a separate vehicle is available

✓ **SENIORS:**

No age limit; must be able to walk and step up into vehicle



ITINERARY

[CLICK HERE](#)

TOUR VIDEO

[CLICK HERE](#)

+1-877-480-6881

info@gotouchdown.com

http://www.gotouchdown.com